



# EAGLE

**Manufacturers of Equipment for  
Mixing, Transferring and Storing  
Bulk Solids Materials.**

*Box and Drum Dumpers*

*Batch Mixers*

*Storage Silos*

*Surge Bins*

*Portable Hoppers*

*Container Tilters*

*Bag Handling Equipment*

*Pneumatic Conveying*

*Auger Conveying*

*Tube Coilers*

*Installation Crews*



The Eagle Group, Ltd.  
8384 West Peck Road  
Greenville, MI 48838

Phone: (616) 754-7777  
Fax: (616) 754-1555  
E-mail: [sales@eaglegrouppltd.com](mailto:sales@eaglegrouppltd.com)  
Web Page: [www.eaglegrouppltd.com](http://www.eaglegrouppltd.com)

# **THE EAGLE GROUP: DEPENDABLE SOLUTIONS FOR DRY SOLIDS PROCESSING CHALLENGES**

---

Manufacturer of mixing, conveying, and dumping auxiliary equipment for chemical, plastic, food, and pharmaceutical industries.

The Eagle Group, Ltd. is the leader in engineering, designing, and manufacturing of specialty material handling equipment and systems.

Eagle's professional engineering staff utilizes the latest computer software and equipment to achieve our goal of building quality equipment that can not be surpassed.

Our manufacturing facility is staffed with highly trained metal fabricators, hydraulic technicians, and electricians who utilize up-to-date production machinery. Expertise in stainless steel, aluminum, and carbon steel fabrication, provides our customers with high-quality, high-tolerance equipment options.

Eagle's installation crews, when called upon, will guarantee that all equipment (including bolted and/or welded silos) are installed to your complete satisfaction.



**Smooth-Wall, Welded Aluminum Tanks**



**Welded Smooth-Wall Steel Tanks**



**Bolted, Corrugated Steel Tanks**



**Galvanized Steel, Bolted, Corrugated Tanks**

# BATCH MIXERS

---

In creating this line of Eagle batch Mixing Equipment, we have taken great care to develop mixers to meet the variety of needs in the industries we serve. The result, our family of three workhorse styles. Each designed and built for long lasting, reliable service. From the sturdy welded steel construction of the mixer body to the reliable drive and mixing components, you can depend on these mixers for years of reliable use batch after batch.

Start with one of the three standard Mixer designs shown below. Each is designed for mixing dry free-flowing pellets, granulars, and powders. Then add the features you need to make your material mixing process as efficient and time saving as possible. For instance, fill material(s) automatically by volume or weight, mix for the required amount of time, and discharge directly into the takeoff mechanism of your choice. Literally any system of fill and discharge can be accomplished by Eagle engineers and the full line of available accessories.

## RAPID MIX Series I

The Eagle Rapid Mix Series I is a top loading mixer for blending dry free-flowing materials. Capacities from 350 pounds to 65,000 pounds are available. Smaller models are provided with fork lift channels for easy portability from the mixing area of your facility to any point(s) where material is needed. Durable construction assures low maintenance requirements. The Rapid Mix Series I features top loading either manually or automatically through a closed material delivery system. Mixed materials are conveniently discharged through a bottom center slide gate opening.

## RAPID MIX Series II

Eagle Rapid Mix Series II Mixers are similar in concept to the Series I design with the exception of their bottom load design. Units range in capacities from 800 pounds to 65,000 pounds (or larger) and utilize an internal vertical mixing screw to provide a fast gentle blend of materials. Vertical Mixers of this type have been in production for more than 50 years; owing to the simplicity of the mixing concept that has withstood years of dependable service by users from a variety of industries.

## VERTI-MIX Powder Material Mixer

The Eagle Verti-Mix is a rugged batch mixer designed specifically for fast thorough mixing of dry powder material of all sorts. Mix rates of eight minutes or less result from the unique design of its vertical, helically shaped spiral mixing ribbon that works material in a constant mixing motion. Various sizes are available for effective use with different materials, taking into account the specific characteristics of each powder ingredient.



# MATERIAL TRANSFER/CONVEYING EQUIPMENT

Look to The Eagle Group for safe, reliable transfer of materials received in boxes, drums, bags, bulk truck, and bulk rail cars.

**Container Dumpers and Tilt Tables:** Transfer bulk materials from various containers with Eagle hydraulic dumpers. Static one-position dumpers or vertical lift, seal, and dump models easily handle bulk material transfer from boxes, drums, metal hoppers, and other containers. Container tilt tables facilitate the transfer of bulk materials from bulk containers.



**Standard Box Dumper**



**Corner Dumper**



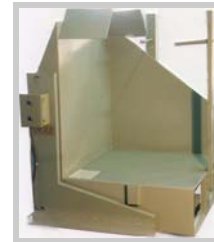
**Drum Dumper Seal and Hi-Lift**



**Tilt Tables**



*Container Dumpers  
Standard & Custom  
We make all kinds*



**Side Dumper**

**Bag Handling Equipment:** Transfer material from small bags and/or bulk bags. Eagle bulk bag unloaders and bag break stations allow the emptying of bags into conveying or process equipment.



**Bulk Bag Unloader**



**Bag Break Stations**



**Bag Break Station with Compactor**

# TRANSFER & CONVEYING EQUIPMENT

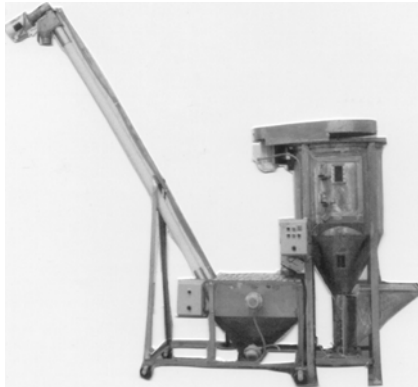
## Power Hoppers – Agitator Transfer Hoppers – Screw Conveyors

---

When transporting dry, powdered or granular materials such as plastic pellets or powders, plastic regrind, sawdust, granular and powdered chemicals, rice and other granular food ingredient, Eagle's "Auger Conveying Systems" are the most versatile, dependable, and economical offered.



**Power Hopper  
Solid Core Auger**



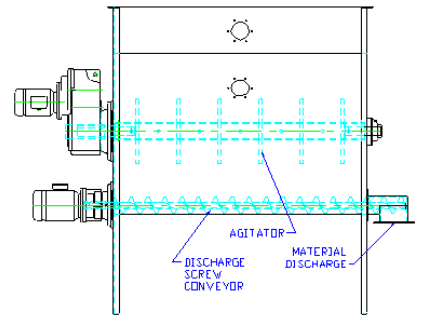
**Stainless Steel  
Power Hopper and Mixer**



**Power Hopper  
Flexible Auger**

---

**Agitator Transfer Hoppers** – For difficult non-free flowing materials, agitators are added to the hopper to eliminate bridging or clogging of the product being transferred.



---

**Screw/Auger Conveyors** - Simple, reliable systems with only one moving part powered by an economical electric motor. Tube-Auger conveyors and "U" Trough-Auger conveyors.



**Solid Core Screw/Auger  
Systems**



**Flexible Auger (core-less)  
Systems**



**Tube Style Auger**

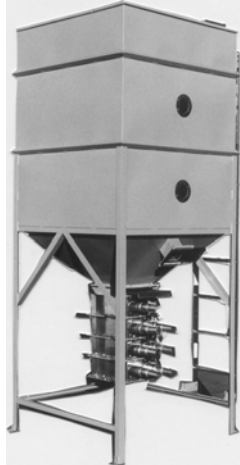


**"U" Trough Auger**

# MATERIAL STORAGE

Store material in and around your facility safely and within easy access to processing points of need. The Eagle Group offers a variety of economical solutions from small portable storage hoppers to large capacity bulk material storage silos.

**Surge Bins/Day Bins:** Eagle surge bins are welded steel storage bins available in standard sizes from 1,000 pounds to 20,000 pounds of material depending on your needs. Eagle bins are economical, space saving in-plant bins designed to handle the intermediate storage of materials transferred from bulk silos to process machinery.



**Portable Hoppers:** The Eagle port-a-bin hopper is a convenient means of transporting materials between bulk storage bins and your processing equipment. Available in standard capacities from 500 pounds to 4,000 pounds.



**Components:** Complete the material handling system with Eagle supplied pneumatic conveying components .

**Standard/Custom  
Welded Fabrications**



**Tubing and Pipe  
(Straight Lengths)**



**Tube and Pipe Bends**



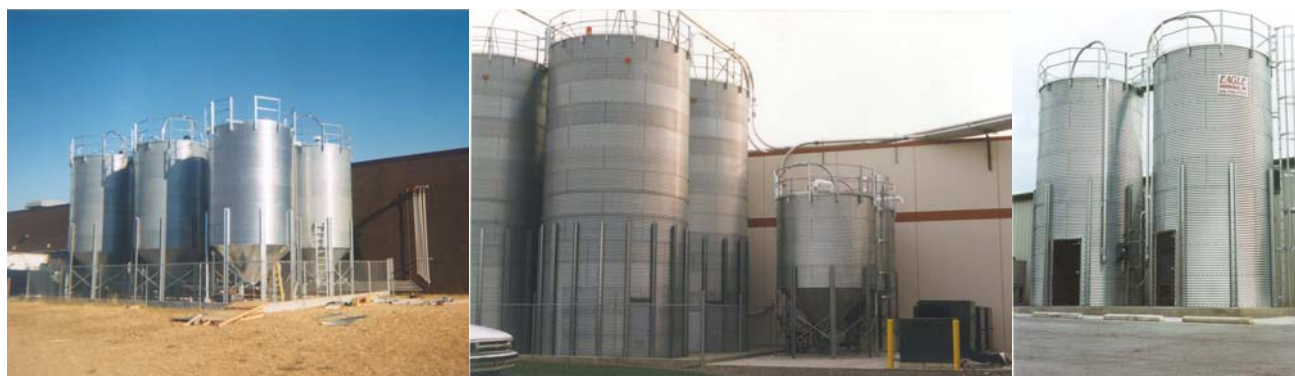
**All Round Couplings and  
Repair Clamps**



# SILOS

---

**Corrugated, Bolted, Galvanized Steel Tanks:** The most affordable offered and provide the easiest method of trimming bulk material handling and storage costs. Standard sizes range from 6 feet diameter to 21 feet diameter. Capacities range from 124 cubic feet to 6,820 cubic feet.



---

**Welded Steel Tanks:** Factory welded, one-piece construction insures the high quality , low cost solutions to your raw material storage requirements. Standard sizes range from 8 feet diameter to 14 feet diameter; capacities range from 302 cubic feet to 8,500 cubic feet.



---

**Bolted , Smooth Wall Steel Tanks:** Factory coated, bolted steel shell construction silos are available in standard sizes ranging from 9 feet diameter to 55 ft diameter. Capacities range from 1,275 cubic feet to 96,470 cubic feet.



Complete tank erection by Eagle's professional crews provides single source responsibility. Our construction professionals travel worldwide.

---

## COMMITMENT TO EXCELLENCE

Details are the difference between mediocre and the best.

Eagle is committed to designing and building auxiliary equipment that is guaranteed to satisfy and endure.

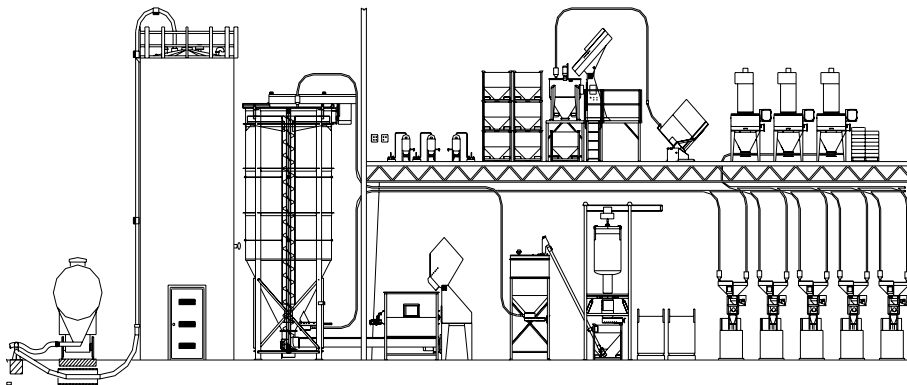


## EXPERIENCE

Some companies *dream* of success.....While Eagle *works* hard at it. Personnel with over a half-century engineering and fabricating experience working for you.

## INNOVATION

The best way to predict the future..... Is to make it happen. Trained design teams to help you get the most out of your process.



# EAGLE

The Eagle Group, Ltd.  
8384 W. Peck Road  
Greenville, MI 48838

Phone: (616) 754-7777  
Fax: (616) 754-1555  
E-Mail: [sales@eaglegroup ltd.com](mailto:sales@eaglegroup ltd.com)  
Web Page: [www.eaglegroup ltd.com](http://www.eaglegroup ltd.com)